



PARKING LOT REPAIR

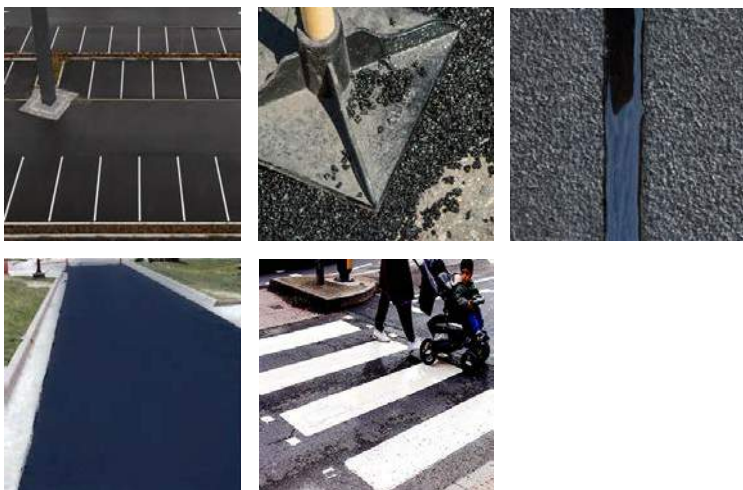
YOUR PARKING LOT SAYS MORE THAN YOU THINK

Seasonal temperature changes and extreme weather conditions can wreak havoc on your parking lot. Maintaining your parking lot regularly with the right products prevents safety hazards and makes a good impression on potential customers.

Benefits of Industrial-Grade Parking Lot Repair:

- △ Withstands heavy traffic and harsh conditions better
- △ Easy application saves time
- △ Reduces yearly maintenance and repair costs

You need a repair solution that is fast, easy-to-use, and effective. Tri-Chem's team of knowledgeable consultants can provide you with the right products and maintenance strategies for your specific environment.





PARKING LOT REPAIR

CRACK GONE SUPER



Crack Gone Super seals cracks where structures meet sidewalks and/or driveways. It produces a tough, flexible membrane that reduces water intrusion.

REPAIR



Repair is an all-weather patching compound used to keep shipping and loading areas, parking lots, drives, and walks in safe repair all year round.

TOP COAT



Top Coat is an asphalt emulsion material specifically developed to seal hairline cracks and protect and give new life to asphalt pavements.

ROAD LINE FAST SET



Road Line Fast Set is a conventional dry (non-heat) marking paint for concrete, brick, cured asphalt-surfaced roads, driveways, airfields, etc. It may be made reflective.